



Mechanical Design Lead

Job Advertisement

Position: Mechanical Design Lead

About i4PD

i4PD is an employee-owned product design and development consultancy. Our company is an established brand with an excellent reputation for achieving a competitive edge for small and large businesses alike by bringing new or improved products to market.

The company employs experienced and creative designers and engineers who operate out of i4PD's studio on the South side of Edinburgh. The team works collaboratively with our clients to augment their internal capabilities, supporting them to add functionality, reduce cost, increase visual appeal, enhance usability, and keep pace with technological advancements. Our clients include household names and those on their way to becoming leading consumer electronics and medical device brands.

About the Role

As Mechanical Design Lead for i4PD you will be a talented and experienced innovator who is comfortable rolling up your sleeves to demonstrate and inspire your team on development projects spanning a wide range of industries. You will meet regularly with your team to review design outputs and provide personal development training. You will have oversight responsibility for team outputs ensuring design suitability and QMS compliance.

Alongside your team management responsibilities, you will also be personally responsible for delivering client projects (60% of your week) including concept designs, detailed engineering, prototyping and technical outputs. You will collaborate with our multidisciplinary teams in electronics, software, and product design to ensure we deliver exceptional results for our clients.

You will also support business development activities for i4PD. This includes the estimation of new projects and broader activities that promote our capabilities.

Your Background:

- Bachelor's honours degree in Mechanical Engineering or a related field. A Master's degree is preferred.
- Min. 10 years industry experience.
- High level of confidence to reliably deliver prototype and production designs that meet or exceed customer specifications.
- Able to identify technical project risks
- Able to identify, communicate and resolve technical issues to minimise impact on project timelines.
- Highly experienced and proficient in the use design tools like SolidWorks and simulation modelling.
- Advanced user of MS applications including Excel, PowerPoint and Word.

Position: Mechanical Design Lead

Research and Discovery

- Exploring user need and turning them into product requirements
- Research (technologies, materials, science, manufacturing techniques)
- Creation of system diagrams for communication to stakeholders
- Identification of risks, hazards, environment and product territories.

Concept Generation and Development

- Create concept sketches or block CAD either collaboratively within a team or independently.
- Critique and discuss concepts
- Take part in brainstorming and contribute ideas. offer guidance in terms of feasibility.
- Read and understand a client brief to take the elements of that client brief and turn into a set of viable concepts. Challenge client on brief/requirements.

CAD Models, Assemblies, Drawings.

- Create engineering CAD parts and assemblies.
- Create technical drawings that detail part dimensions and tolerances as set out by our internal guidance document.
- Perform self checks on own work to ensure readiness for review.

CAD Models, Assemblies, Drawings. (contd.)

- System integration with other teams and disciplines within i4PD.
- Be an authority on suitability for manufacture.
- Conduct detailed design reviews.
- Review CAD drawings, assemblies and parts of peers.

Prototyping, Testing and Transfer to Manufacture

- Create POC/Prototypes.
- Design suitable test plans based on requirements and execute/record test plan.
- Oversee and supervise prototyping activities within a team
- Oversee Transfer to manufacture

Design Documentation and Reporting

- Maintaining accurate and up-to-date technical documentation
- Ensuring adherence to QMS processes and identified compliance standards
- Ensuring quality standard of any design outputs issued to clients or suppliers
- Produce and present material to both internal and external audiences

Business Development Support

- Generate accurate cost estimates, write proposals and support pitch meetings for new mechanical design and development projects.
- A clear understanding of both technical and commercial limitations is required.
- You may also be asked to support business development activities at trade shows, conferences etc and identifying new business opportunities on behalf of i4PD.

Team leadership and Performance Management

- Allocation of work across MDE team
- Implementing the Company's Performance Management Framework through regular 1:1s and annual appraisal reviews with team members
- Provide effective coaching, training and guidance to team members to ensure the required level of employee technical performance is achieved
- Identifying & managing recruitment and training within the team.

Position: Mechanical Design Lead

Benefits:

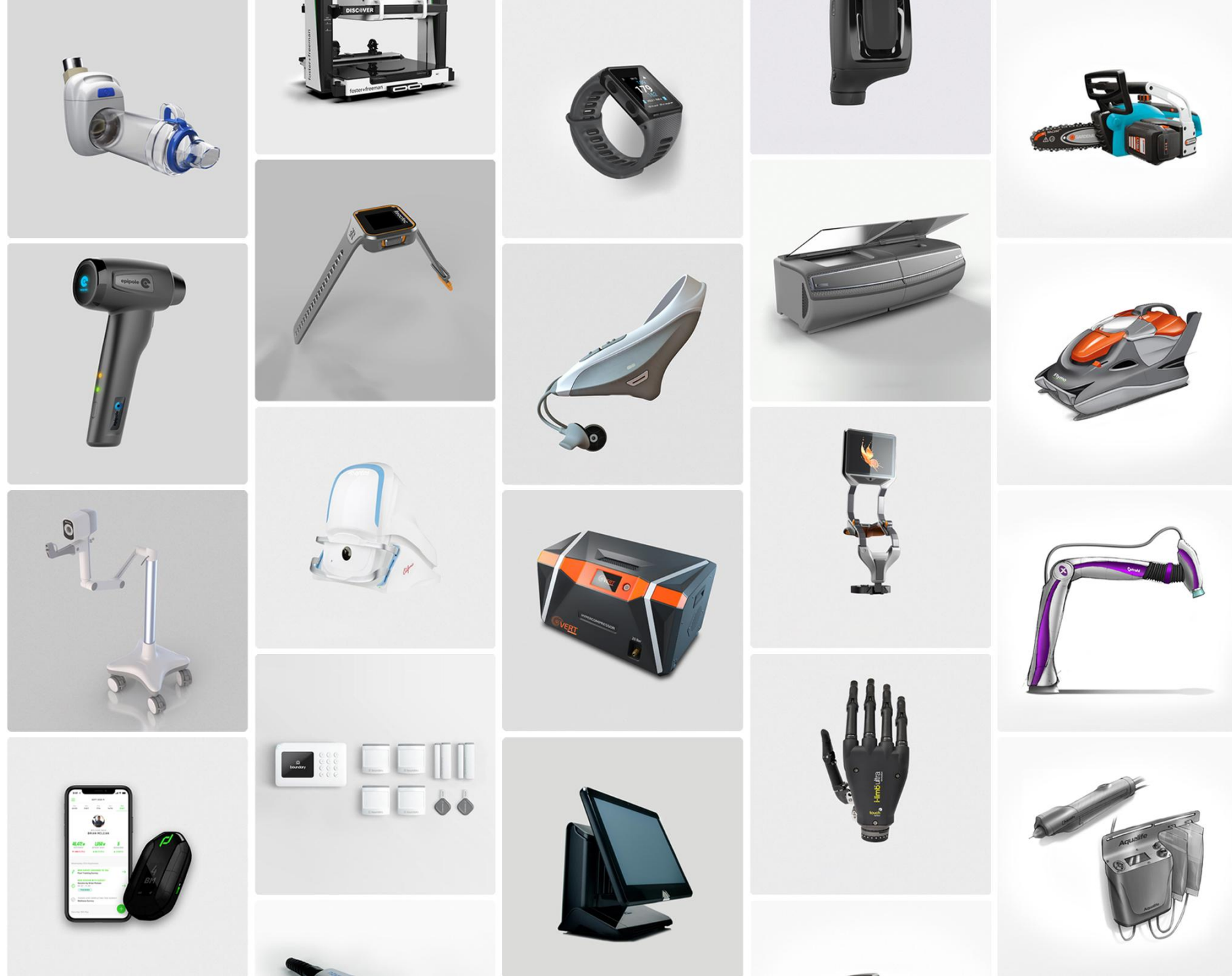
This hybrid role (37.5hrs per week) will allow you to work part of the time remotely if needed or full time in our bright and open studio based 25 minutes south of Edinburgh's centre in stunning rural surroundings with views of the Pentland Hills.

As a member of the i4PD team you will be offered a competitive package that includes an equal share of company tax-free bonuses through the employee trust (after 12 months service).

We recognise the value, to both you and the company, of maintaining a strong work life balance which we foster through flexible working patterns.

Enhanced sick pay, maternity/paternity leave and holiday schemes are also offered alongside a Cycle to Work scheme, EV lease scheme and numerous salary sacrifice benefits via Mintago (e.g. tax-free gym membership) as part of the package.





How to apply?

This is a superb opportunity to join a forward thinking and successful SME business. In return you can expect a competitive salary & company workplace pension in a challenging and supportive culture and the opportunity to grow your career.

Apply today by sending an email to jobs@i4pd.co.uk quoting job reference 'Mechanical Design Lead' and include the following:

- Your CV
- Portfolio
- A covering letter briefly describing the contribution your skills & experience would bring to the team.

designing the future together

i4 Product Design
 +44 (0) 131 448 2266
enquiries@i4pd.co.uk
www.i4pd.co.uk